

100 lb. Full Extension Slides



Mounting: Side mount.

Side Clearance: 1/2" plus 1/32" minus 0" each side.

Height: 1-13/16 (45.7mm)

Loading: 100 pound class.

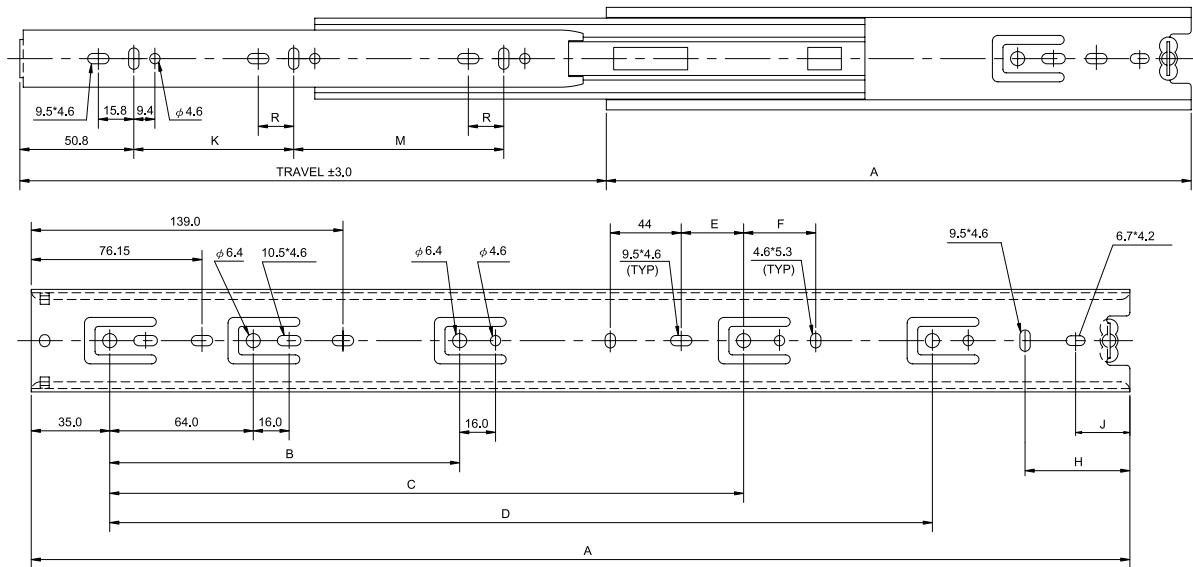
Size: 10", 12", 14", 16", 18", 20", 22", 24", 26", 28"

Feature: 32mm hole pattern. Simple access mounting on drawer and cabinet members. Breathing tabs self adjust to side clearance. Hold/close function. Lever disconnect for drawer removal. For face frame & frameless mounting.

Finish: Zinc plated.

Packing: 15 pairs individually poly-packaged, no screws.

Option: Black zinc plated, Galvanized steel, Interlock, 1 over-travel, Back socket, Self-closing.



SIZE (IN)	TRAVEL (mm)	A (mm)	B (mm)	C (mm)	D (mm)	E (mm)	F (mm)	H (mm)	J (mm)	K (mm)	M (mm)	R (mm)
10	254.0	254.0	160.0						18.0	169.5		
12	304.8	304.8	224.0							96.0	128.0	15.8
14	355.6	355.6	224.0					46.6	18.0	128.0	128.0	15.8
16	406.4	406.4	224.0	288.0				33.4	18.0	160.0	160.0	15.8
18	457.2	457.2	224.0	352.0		25.45	32.15		18.0	160.0	192.0	15.8
20	508.0	508.0	224.0	352.0	416.0	25.45	32.15		18.0	192.0	224.0	15.8
22	558.8	558.8	224.0	352.0	416.0	25.45	32.15	57.8	18.0	224.0	256.0	15.8
24	609.6	609.6	224.0	352.0	480.0	25.45	32.15	44.8	18.0	256.0	256.0	15.8
26	660.4	660.4	224.0	352.0	544.0	25.45	32.15		18.0	256.0	320.0	15.8
28	711.2	711.2	224.0	352.0	544.0	25.45	32.15	82.2	18.0	256.0	352.0	15.8

